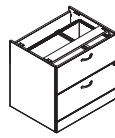




ZIRA

File/File Shell
Box/Box/File Shell
File/Open Shell



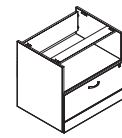
Z36L2ES
Z30L2ES
Z36M2ES
Z30M2ES



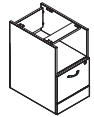
Z16L2ES
Z15L2ES
Z16M2ES
Z15M2ES



Z16L2BFS
Z15L2BFS
Z16M2BFS
Z15M2BFS



Z36L2FS
Z30L2FS
Z36M2FS
Z30M2FS



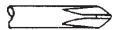
Z16L2FS
Z15L2FS
Z16M2FS
Z15M2FS

Disassembly Instructions

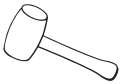
TOOLS REQUIRED



WRENCH
Size #16 or 5/8"



PHILLIPS
Screwdriver size #2

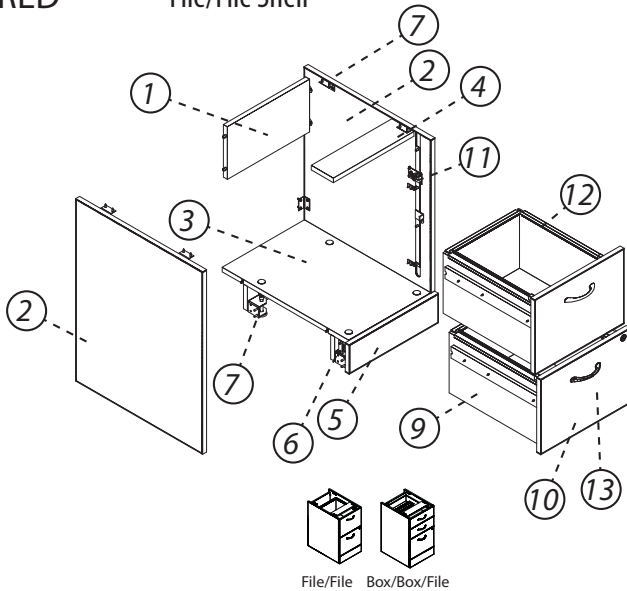


Rubber Mallet



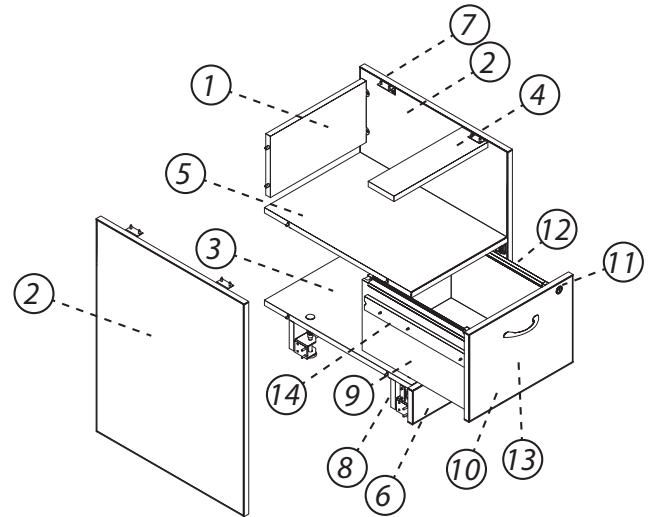
Safety Glasses

File/File Shell



File/File Box/Box/File

File Shell w/ Open Shell



ITEM	DESCRIPTION	QTY	MATERIAL
1	BACK	1	PARTICLEBOARD
2	SIDE	2	PARTICLEBOARD
3	BOTTOM	1	PARTICLEBOARD
4	SUPPORT PANEL	1	PARTICLEBOARD
5	KICKBASE	1	PARTICLEBOARD
6	CORNER BRACKET/PLATE	6	STEEL
7	CORNER BRACKET W/LEVELER	4	PARTICLEBOARD
8	SCREWS	101	STEEL
9	DRAWER	2	MDF
10	DRAWER FRONT	2	PARTICLEBOARD
11	DRAWER LOCK MECHANISM	1	STEEL
12	HANGING FILE SYSTEM	2	STEEL/PLASTIC
13	HANDLE	2	ALUMINIUM
14	SLIDES (INNER)	4	STEEL
15	SLIDES (BASE PLATE)	4	STEEL

ITEM	DESCRIPTION	QTY	MATERIAL
1	BACK	1	PARTICLEBOARD
2	SIDE	2	PARTICLEBOARD
3	BOTTOM	1	PARTICLEBOARD
4	SUPPORT PANEL	1	PARTICLEBOARD
5	SHELF	1	PARTICLEBOARD
6	KICKBASE	1	PARTICLEBOARD
7	CORNER BRACKET/PLATE	6	STEEL
8	CORNER BRACKET W/LEVELER	4	STEEL
9	DRAWER	1	MDF
10	DRAWER FRONT	1	PARTICLEBOARD
11	DRAWER LOCK MECHANISM	1	STEEL
12	HANGING FILE SYSTEM	1	STEEL/PLASTIC
13	HANDLE	1	ALUMINIUM
14	SLIDES (INNER)	2	STEEL
15	SLIDES (BASE PLATE)	2	STEEL
16	SCREWS	85	STEEL

Please contact Global Customer Care at 905-660-5101 for any questions or concerns.

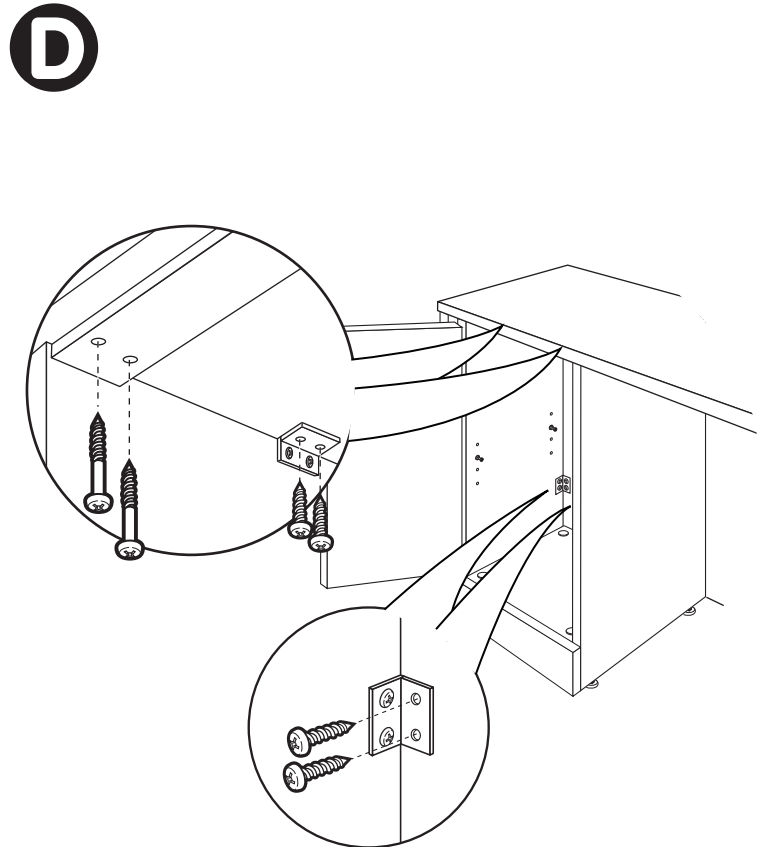
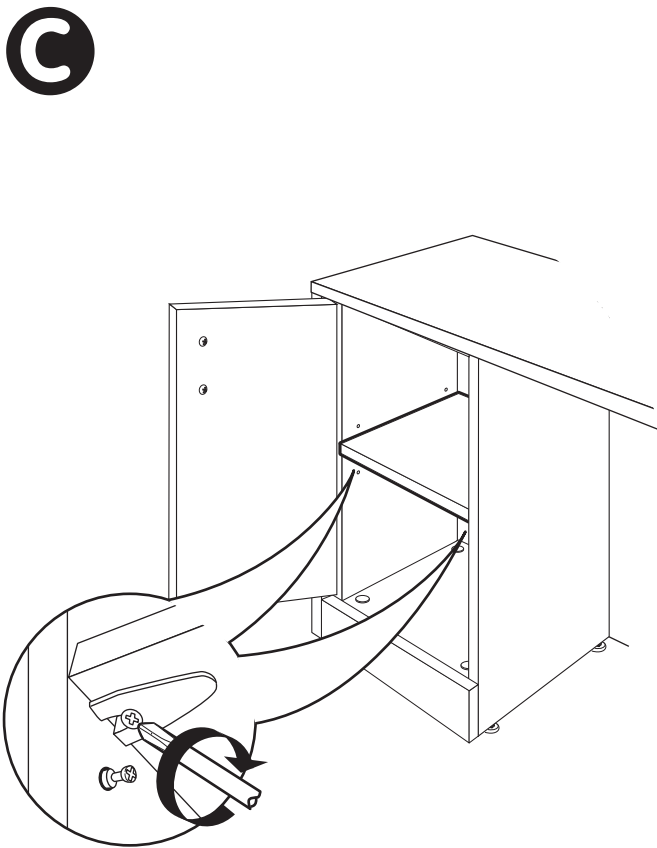
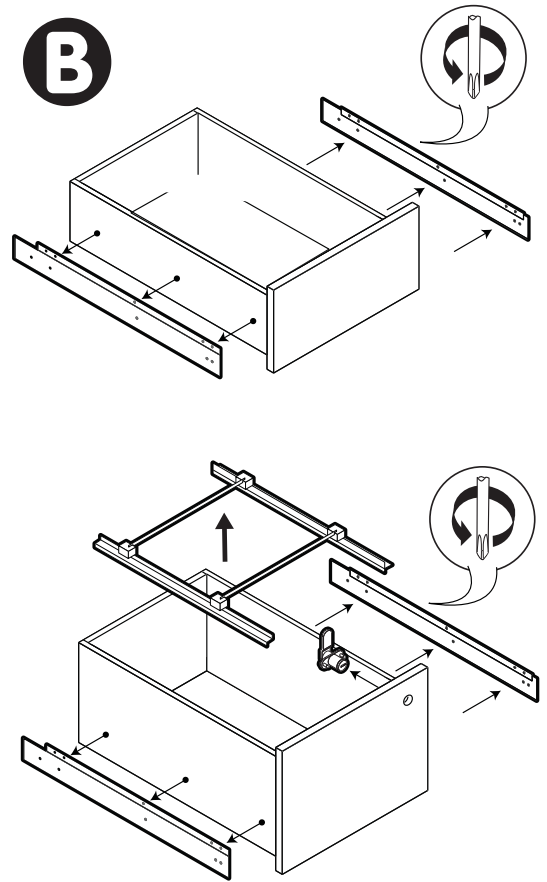
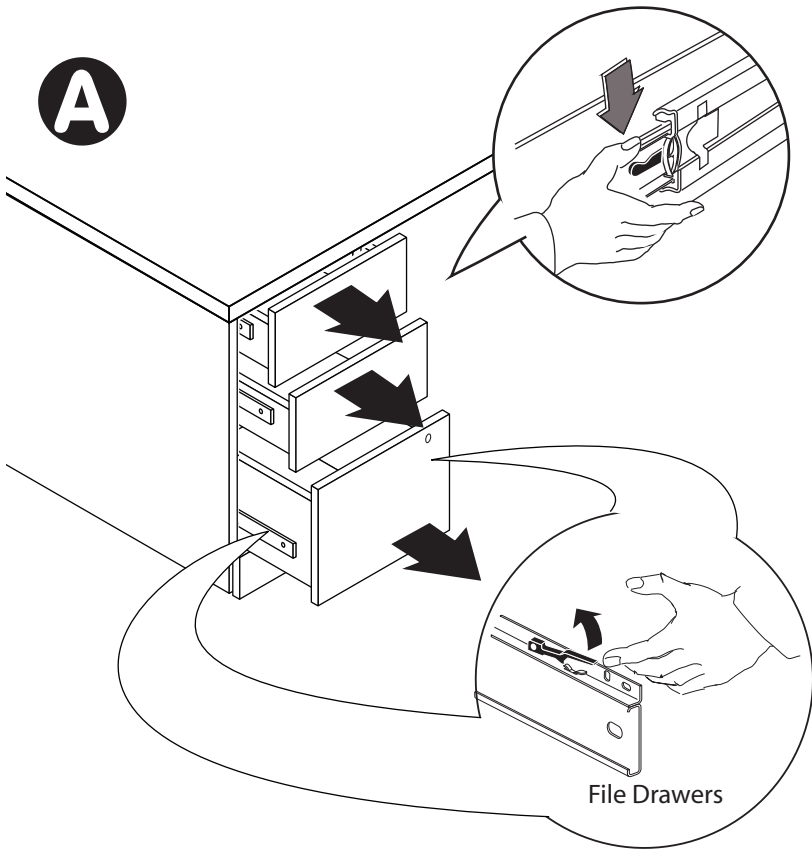
STEPS

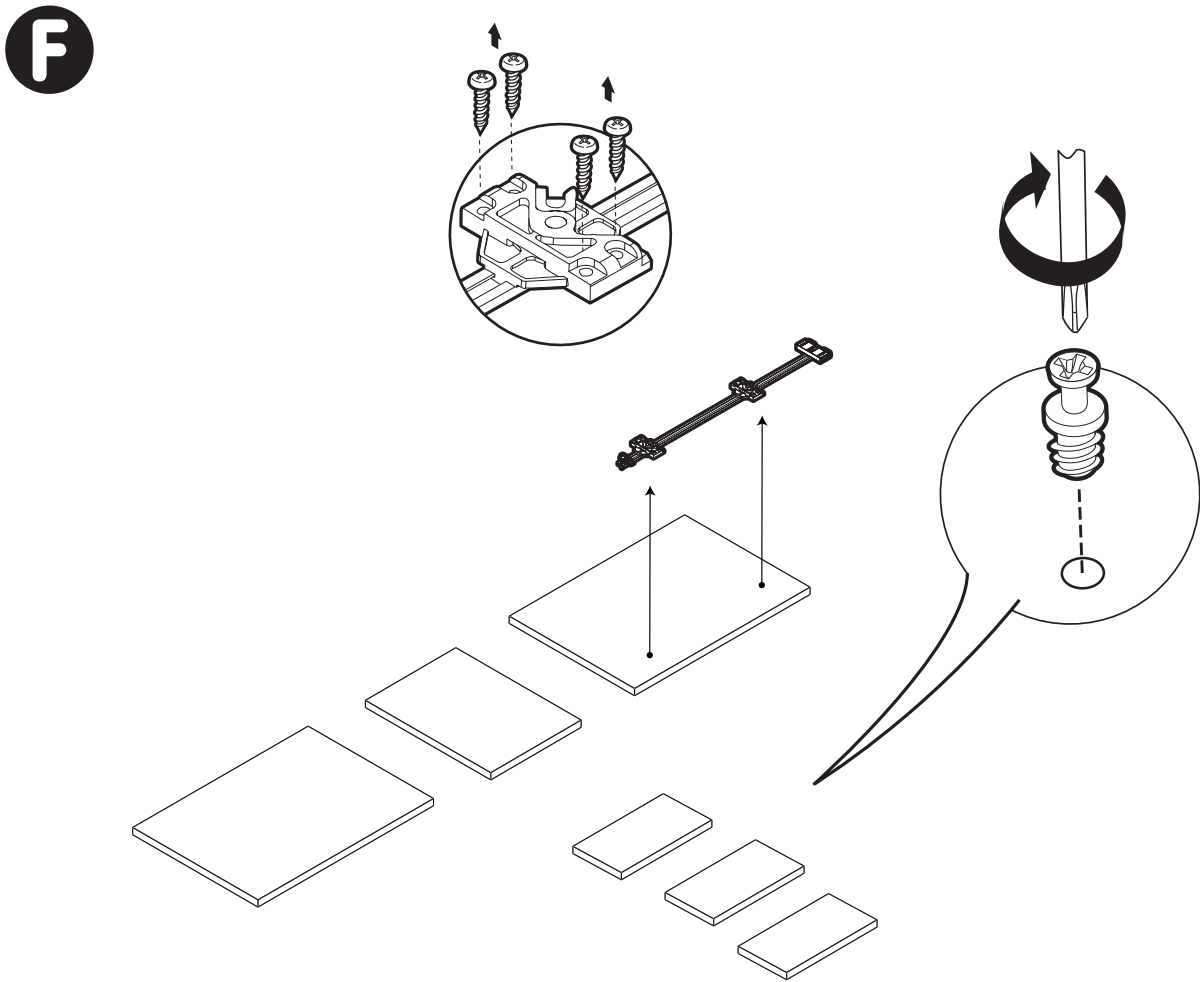
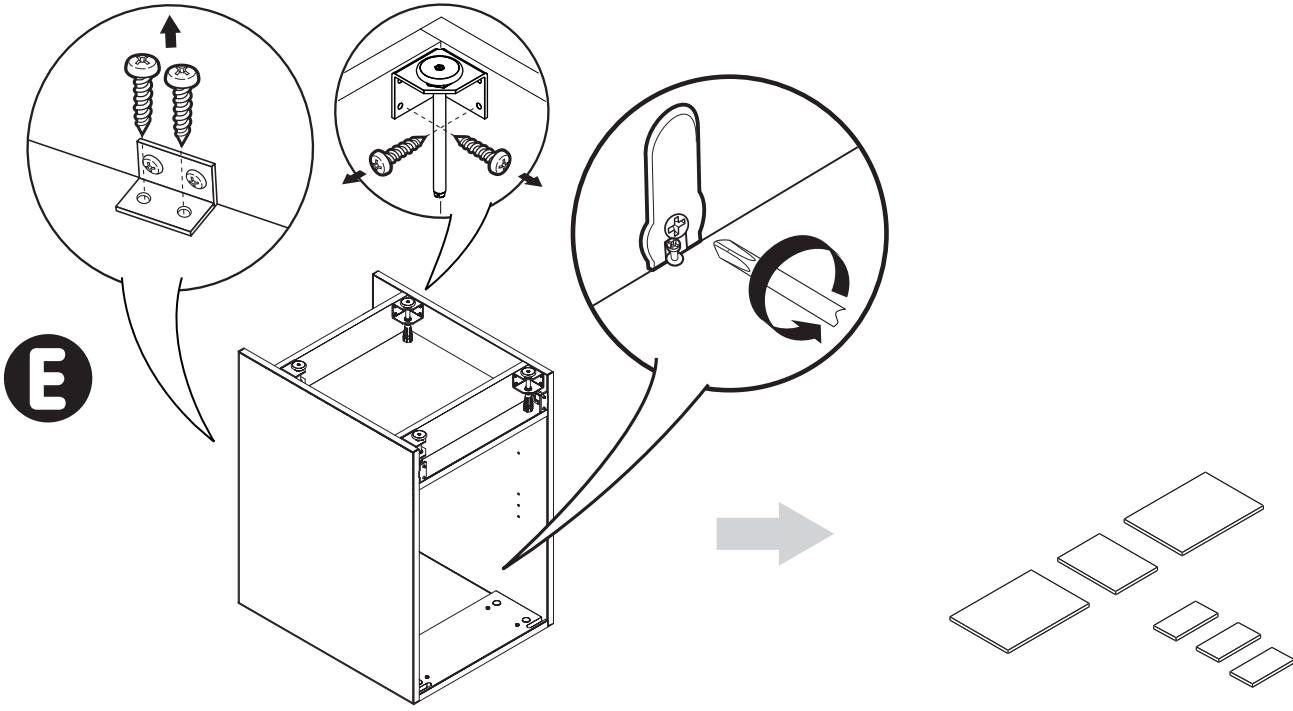
- A** Remove Drawers by Fully Extending and Disengaging latch on each slide while pulling drawer out. Remove door by pressing on back of hinges and pulling doors forward.
- B** On Drawer boxes, unscrew and remove slide channels, handles and door lock mechanism. Remove hanging system.

- C** For units with open Shell, Untighten Blum Connector and remove the shelf.
- D** Remove screws from Corner Bracket and Support Panel. Detached unit from desk.
- E** Turn unit upside down. Remove screws from Corner Bracket and bottom panel. Untighten Blum Connector and remove the bottom. Unscrew and remove corner brackets with leveler and Drawer lock Mechanism.

NOTE: Any alterations to listed components will void the manufacturer's warranty. The manufacturer will not be responsible for any damage or bodily harm caused by alterations in accordance with national or local electrical codes and manufacturer's specifications. In accordance with the manufacturer's policy of continual product improvement, the product presented in this document is subject to change without notice or obligation.

Z-Dis 27 rev: 00

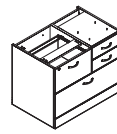




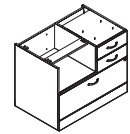


ZIRA

Mixed Storage Shell
Mixed Storage Shell w/Open Shelf



Z36L2XS L/R
Z30L2XS L/R
Z36M2XS L/R
Z30M2XS L/R



Z36L2NS L/R
Z30L2NS L/R
Z36M2NS L/R
Z30M2NS L/R

Disassembly Instructions

TOOLS REQUIRED

Mixed Storage Shell

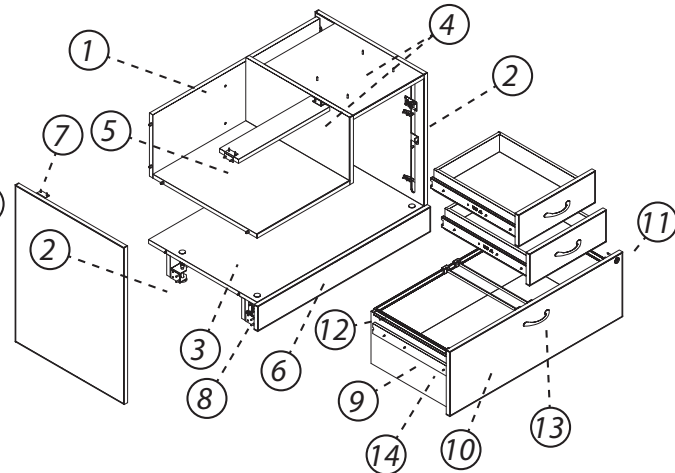
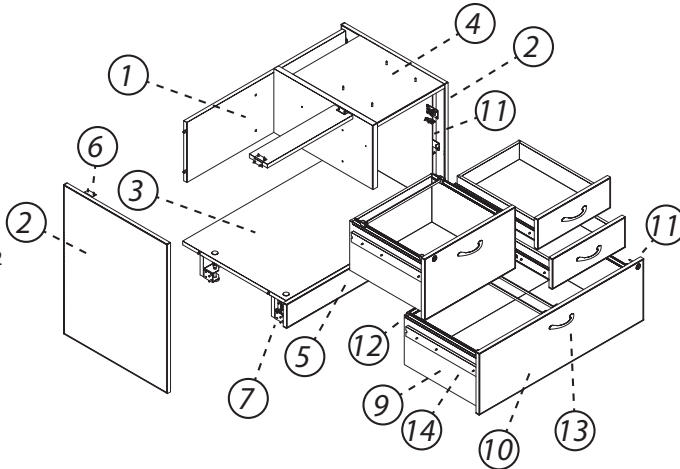
Mixed Storage Shell w/Open Shelf

WRENCH
Size #16 or 5/8"

PHILLIPS
Screwdriver size #2

Rubber Mallet

Safety Glasses



ITEM	DESCRIPTION	QTY	MATERIAL
1	BACK	1	PARTICLEBOARD
2	SIDE	2	PARTICLEBOARD
3	BOTTOM	1	PARTICLEBOARD
4	SUPPORT PANEL	1	PARTICLEBOARD
5	KICKBASE	1	PARTICLEBOARD
6	CORNER BRACKET/PLATE	5	STEEL
7	CORNER BRACKET W/LEVELER	4	PARTICLEBOARD
8	SCREWS	148	STEEL
9	DRAWER	4	MDF
10	DRAWER FRONT	4	PARTICLEBOARD
11	DRAWER LOCK MECHANISM	2	STEEL
12	HANGING FILE SYSTEM	2	STEEL/PLASTIC
13	HANDLE	4	ALUMINIUM
14	SLIDES (INNER)	8	STEEL
15	SLIDES (BASE PLATE)	8	STEEL

ITEM	DESCRIPTION	QTY	MATERIAL
1	BACK	1	PARTICLEBOARD
2	SIDE	2	PARTICLEBOARD
3	BOTTOM	1	PARTICLEBOARD
4	SUPPORT PANEL/MIDDLE PANEL	3	PARTICLEBOARD
5	SHELF	1	PARTICLEBOARD
6	KICKBASE	1	PARTICLEBOARD
7	CORNER BRACKET/PLATE	5	STEEL
8	CORNER BRACKET W/LEVELER	4	STEEL
9	DRAWER	3	MDF
10	DRAWER FRONT	3	PARTICLEBOARD
11	DRAWER LOCK MECHANISM	1	STEEL
12	HANGING FILE SYSTEM	1	STEEL/PLASTIC
13	HANDLE	3	ALUMINIUM
14	SLIDES (INNER)	6	STEEL
15	SLIDES (BASE PLATE)	6	STEEL
16	SCREWS	131	STEEL

Please contact Global Customer Care at 905-660-5101 for any questions or concerns.

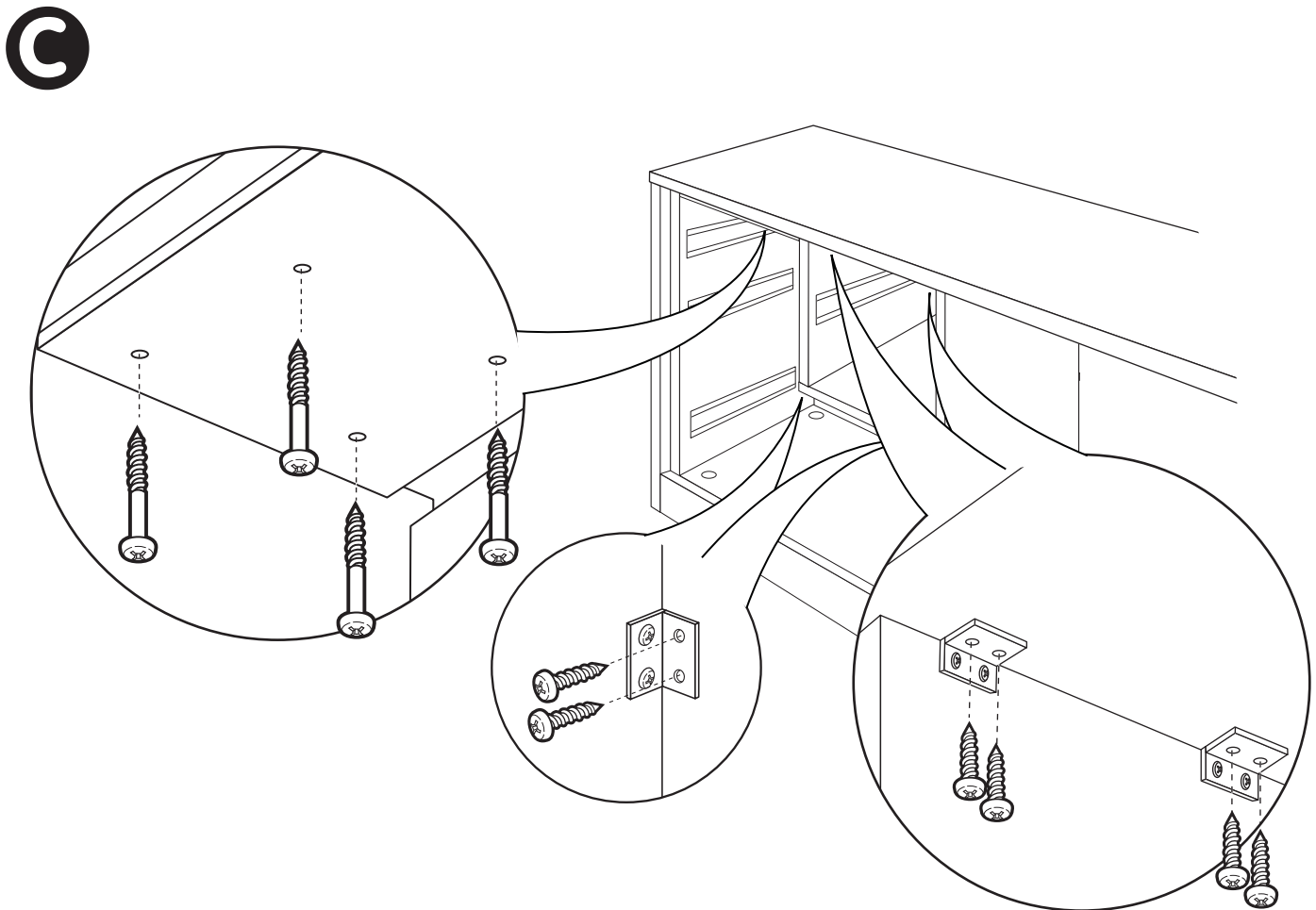
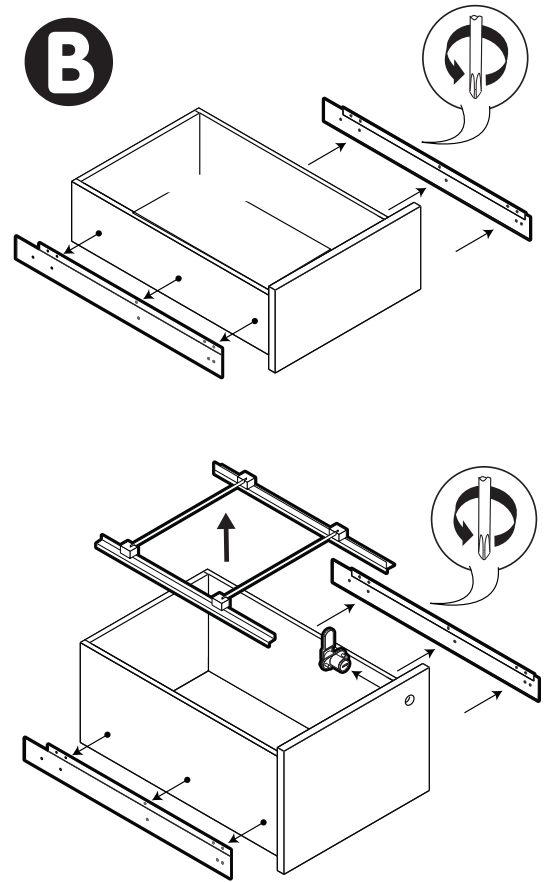
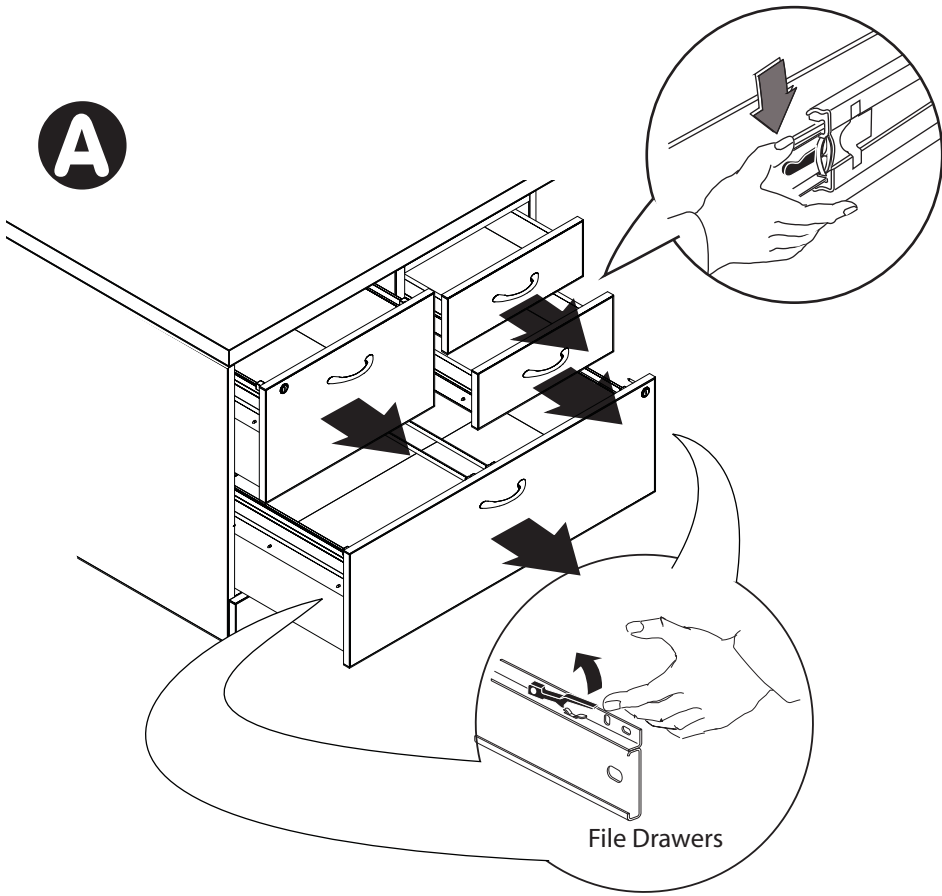
STEPS

- Ⓐ Remove Drawers by Fully Extending and Disengaging latch on each slide while pulling drawer out. Remove door by pressing on back of hinges and pulling doors forward.
- Ⓑ On Drawer boxes, unscrew and remove slide channels, handles and door lock mechanism . Remove hanging system.

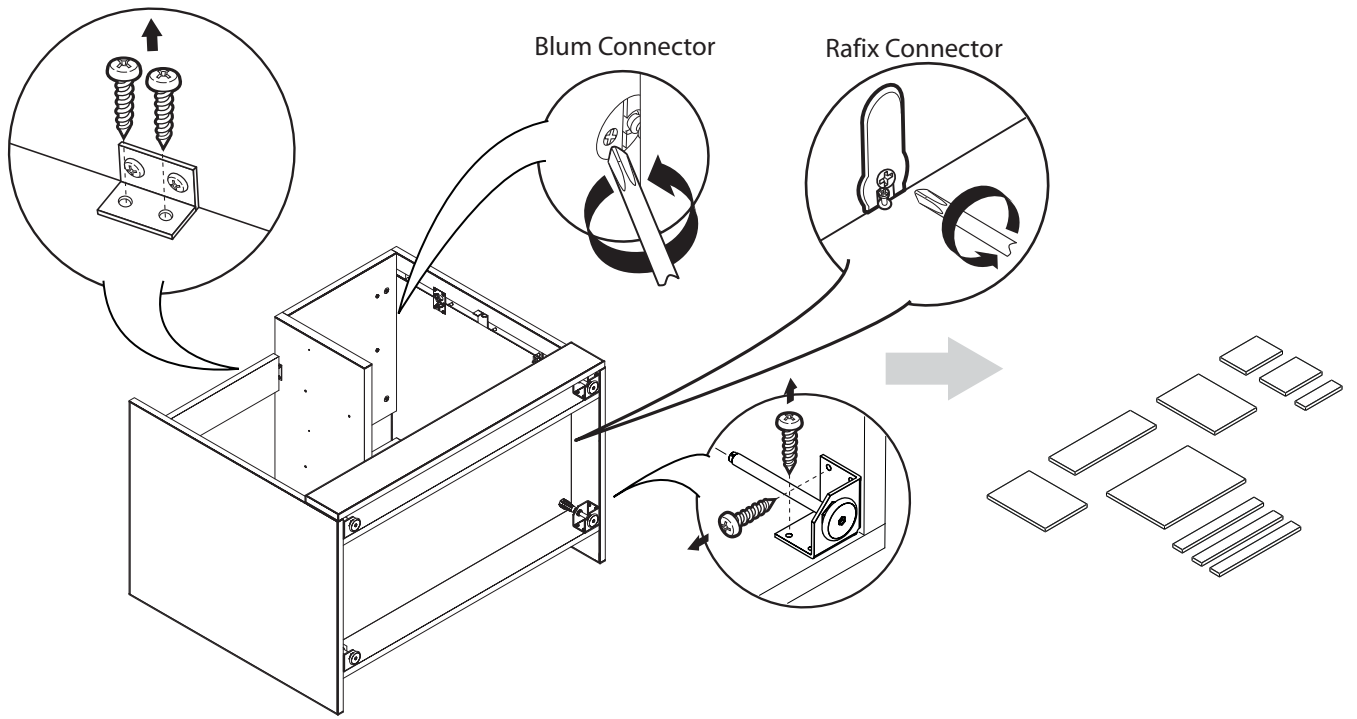
- Ⓒ Remove screws from Corner Bracket and Support Panel. Detached unit from desk.
- Ⓓ Turn unit. Remove screws from Corner Bracket. Untighten Blum and Rafix Connectors. Remove the bottom. Unscrew and remove corner brackets with leveler and Drawer lock Mechanism.
- Ⓔ Unscrew Blum and Rafix bolts.

NOTE: Any alterations to listed components will void the manufacturer's warranty. The manufacturer will not be responsible for any damage or bodily harm caused by alterations in accordance with national or local electrical codes and manufacturer's specifications. In accordance with the manufacturer's policy of continual product improvement, the product presented in this document is subject to change without notice or obligation.

Z-Dis 28 rev: 00



D



E

